

SC PVC NEMA 4X SCREW COVER JUNCTION BOXES

	Catalog Number
	A B C
12	SC121208
	SC121212
14	SC141406
	SC141406
16	SC161206
	SC161608
18	SC181806
	SC181808
	SC181810
	SC181812
20	SC201604
	SC201606
	SC201608
	SC202010
	SC202012
24	SC241806
	SC241808
	SC2418012
	SC242406
	SC242408
	SC242410
30	SC242412
	SC302008
	SC303008
	SC303010
36	SC303012
	SC363608
48	SC363612
	SC484812

Qube PVC Nema 4X screw cover junction boxes are manufactured using 1/4" thick rigid PVC with welded construction.

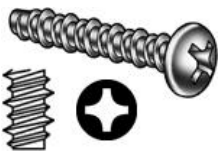
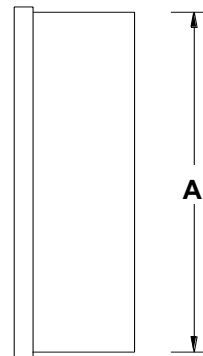
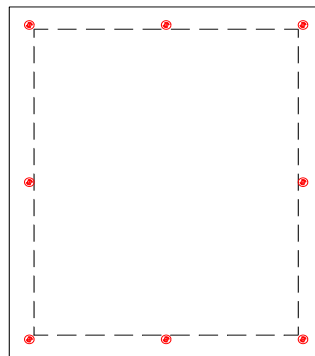
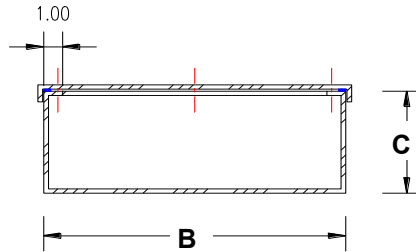
Sizes listed are typical, the manufacturing process allows any size in qty's of 1 unit within maximum dimensions

Max dimensions :
48" X 48" X 36" D.



NOTE:

Product is not traffic rated, and not recommended for direct underground burial.



STAINLESS STEEL SELF
 TAPPING PLASTIC SCREWS
 ARE STANDARD.



CLEAR COVER



POLE MOUNT



CUSTOM

Examples of available options